

KUBOTA

Hydrostatic transmission combined with plenty of power, efficiency and versatility.

DIESEL
TRACTOR

B8200HST

2WD / 4WD



Power. Ease of operation. Tremendous performance in a wide range of jobs. This is the Kubota B8200HST.

The Kubota B8200HST is destined to add another proud chapter to the Kubota story. It is a surprisingly agile diesel-powered tractor with a hydrostatic transmission that makes forward-reverse directional changes easy and instantaneous, while providing virtually infinite speed variations to adapt to any conditions. The B8200HST's power, efficiency and economy are well-suited to a wide range of work applications

in farming, light construction and turf care. And with all this versatility, the B8200HST provides maximum operator comfort with minimum operator fatigue... vital factors in getting any job done better, faster, more effectively. The Kubota B8200HST: another proud diesel tractor made in the Kubota mold of dependable service, durability and reliability... a reputation for excellence known the world over.



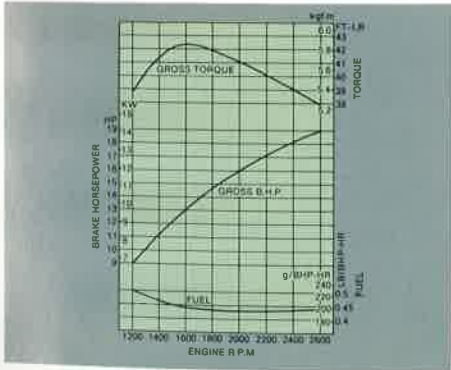
ENGINE

Built for durability and performance

Kubota water-cooled diesel engines are recognized worldwide to be among the most innovative, power-packed and economical designs in their class. And the B8200HST's diesel power plant is no different. It is a rugged, dependable performer that owes its reputation to the "extras" that Kubota builds in: a one-piece, tunnel construction cylinder block that provides extra structural strength; double-thickness, chrome-plated piston rings and high silicon alloy pistons for better fit and a longer service life; an improved, press-installed dry cylinder lining for more efficient heat dissipation;



a chrome molybdenum crankshaft for added strength; cross flow cylinder heads to reduce head distortion; and a hemispherical combustion chamber with a quick-heating glow plug for fast engine starts in cold weather, better combustion, lower exhaust and fuel consumption... among many other features that make the B8200HST's 19 HP, D950-A-DT water-cooled three-cylinder engine such a steady performer.



Injection pump

The B8200HST's engine comes equipped with a small, lightweight, easy-to-service Bosch mini-injection pump. A single rack controls the pump's three plungers, assuring an equal amount of fuel to each cylinder for balanced combustion and smooth firing.

Governor

A centrifugal, ball-weighted, two-spring governor produces fine response through all speed ranges, supplying a proper fuel flow to compensate for sudden load

changes, in addition to providing complete combustion under all load conditions without undue exhaust emissions.

Fuel pump

Fuel is delivered to the injection pump under a consistently maintained pressure, for constant engine speed without fluctuations. Fuel flow and engine performance remain constant even over rugged terrain.



Injection nozzle

The throttle-type injection nozzle injects a fine fuel mist of uniformly distributed fuel particles in a controlled pattern for total combustion and high engine output. This fuel injection system contributes to the engine's overall fuel economy and high performance, while lubrication of all parts helps to achieve overall smooth performance.



Water pump

Coolant is force-fed throughout all parts of the engine for efficient heat dissipation. Thus, the B8200HST's engine can work at high speed over extended periods without overheating, prolonging engine life.

Air cleaner

The large capacity, dry-type air cleaner's filter element has an increased surface area for better efficiency; even the smallest particles are removed from the intake air entering the cylinder. Efficient air cleaning increases engine durability and service life.



Fuel tank

The B8200HST's fuel tank facilitates quick access for fast refills. Holding 5.3 U.S. gallons, the fuel tank's capacity can be easily read from the needle-type fuel gauge on the tractor's control panel.

TRANSMISSION

The B8200HST's hydrostatic transmission takes all the drudgery out of hard work. The slightest foot or heel pressure induces instantaneous-yet-smooth forward-reverse direction changes while added pressure selects the proper travel or work speed. There is no clutching, no shifting motions are necessary for changing in normal operation. Hands can concentrate on steering and implement operation. And for jobs that demand frequent movement to and fro—such as in front loader work, snow removal or mowing—this tractor model's transmission with its quick response and effortless operation will prove a godsend.

Speed control

When a fixed speed is essential, such as in careful rototilling or precise mowing, the operator can quickly and easily select any required speed by means of the B8200HST's speed control lever. Think of this feature as "cruise control" if you will: there's no need to maintain foot pedal contact until you go back to standard heel-and-toe foot operation.



WORKING

Hydraulics

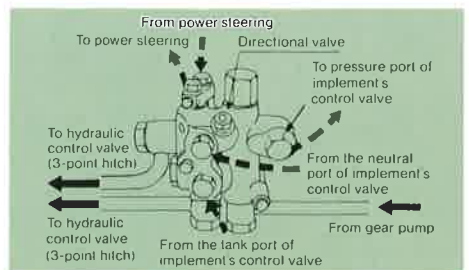
Hydraulic pump

The measure of a tractor is also in how well it can handle a variety of implements. The heart of the B8200HST's powerful, three way feed hydraulic package is a rugged hydraulic pump with a 6.5 U.S. gallons-per-minute capacity... plenty of volume for ample hydraulic power and increased implement efficiency.



Front hydraulic power outlet

Quickly and easily connects up to front-mounted implements, and is primarily designed to facilitate front loader work.



Position control

With the aid of hydraulic pressure, the vertical position (height or tilling depth) of the implement can be selectively set. This is especially useful for box blade, rear blade, or rotary tiller operations.

Power steering (optional)

Power steering provides many benefits in sharp cornering during mowing or in front loader operations that place heavy loads on the front wheels. Operator fatigue is greatly reduced by selecting this B8200HST option.

Implement attachment and use

3-point hitch

The B8200HST's rugged, Category I 3-point hitch allows fast mounting and dismantling of implements, while keeping them precisely positioned during operation. A swinging drawbar frame is standard, also, for trailer hookups, pulling and other towing work.



Two-speed rear PTO

The two-speed rear PTO can be shifted with a single shift lever. With the engine running at 2534 rpm, PTO speeds are:

- 1st 540 rpm
- 2nd 748 rpm*

1st speed is suitable for most types of operations. 2nd speed is suitable when using the Kubota rotary tiller FL1020. After first tilling in 1st speed, retille in 2nd speed to produce best results.

*To prevent PTO-driven implements from over-speeding and possibly causing personal injury, use the 2nd PTO speed only when the implement manufacturer specifically recommends this speed.



Two-speed mid-PTO

The B8200HST's mid-PTO uses a two-speed shift. With an engine speed of 2600 rpm, mid-PTO speeds are:

- 1st 1745 rpm
- 2nd 2416 rpm



Front PTO

The front PTO increases work ability even more and can be applied to a wide variety of operations.

Live PTO

You can select a fixed PTO speed unrelated to vehicle speed for rear, mid-, or front PTO use. This is especially convenient for the beginning stages of rotary tilling operations or for variable speed lawn mowing operations where mowing can continue while the tractor is stationary.

4-WHEEL DRIVE

For many reasons, 4WD is more efficient than 2WD simply because more engine power is converted into tractive power. 4WD also has superior climbing power, four-wheel braking ability and superior traction in reverse. You can almost always count on operating a 4WD tractor in conditions where a 2WD just won't work well at all. And there are many other benefits, to boot: increased work capacity, better front loader operation, greater fuel savings and less tire wear. For all these reasons, Kubota has specialized in putting 4WD in compact tractors since 1975.

Bevel gear drive

The front axle of the 4WD B8200HST incorporates a special bevel gear drive that provides smooth, full power transfer to the wheels at all steering angles along with a smaller turning radius than conventional, universal-joint drive systems. The bevel gear case is completely sealed; the gear mechanism is kept completely lubricated, and full bearing support relieves steering bind. Additionally, the compact bevel case is placed close to the wheels to reduce the chances of damage to crops.



Differential lock

A quick-acting differential lock prevents one-wheel slippage when the tractor is operating in deep mud, sand or snow by applying torque equally to both wheels.



OTHER FEATURES

Dust screens

Incorporated into the side and front engine covers are dust screens that help prevent radiator clogging and engine overheating... especially beneficial when mowing. Removing, cleaning and reinstalling the dust screens is fast and easy; no tools are required.

Safety shields

Engine side shields provide an added measure of safety to help prevent personal injury from moving parts or burns from hot surfaces.



Adjustable wheel tread

The rear wheel tread of the B8200HST can be adjusted by reversing the rear wheels, with minimal effort and time expended.

Brakes

The B8200HST's large brakes provide positive, effortless stopping power. Both left and right brakes can be locked together for high-speed jobs and for road travel. The brakes can be depressed and then secured with a locking lever, acting as a parking brake.



Safety starting switch

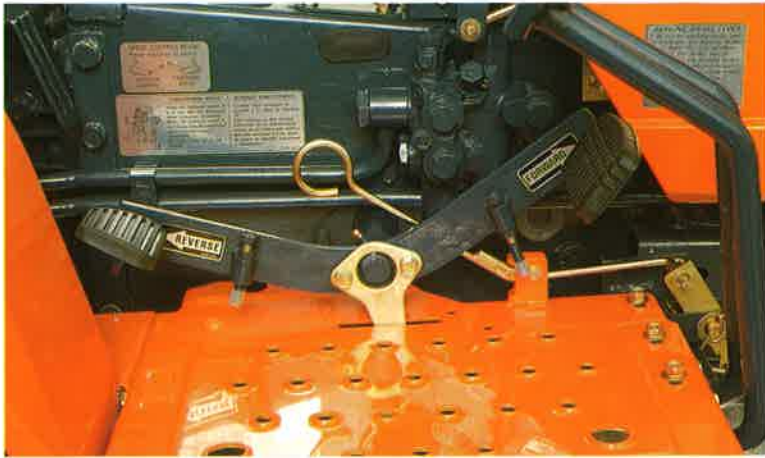
The B8200HST cannot be started unless the clutch pedal is fully depressed, minimizing the occurrence of accidental starts.

Fender safety edges

Fender edges on the B8200HST have been formed into rolled-under safety edges... a far cry from knife-edged fenders found on some other makes of tractors.

The B8200HST's improved transmission makes operation simple and enjoyable.

Think for a moment about the benefits that the B8200HST's hydrostatic transmission brings you! Infinite variable speeds from 0 to 11.31 mph in forward, from 0 to 9.05 mph in reverse. Instantaneous direction changes with no clutching or shifting, keeping your hands free for steering and implement operation. And a fixed speed control that allows you to maintain a constant speed while relaxing foot pressure on the speed control pedal. Besides being vital for jobs like front loading or mowing—where frequent and repetitive direction changes are often mandated—the B8200HST's hydrostatic transmission makes operating this tractor model, for any purpose, a lot easier, a lot more fun.



When a fixed speed is essential, employ the B8200HST's manual speed control. Simply set the speed required and take your foot off the speed control pedal. Perfect for rototilling!

There are other features that make the B8200HST more "operator friendly", too!

One of the major basic design features of any Kubota tractor, from large to small, is operator comfort. The reason is simple. The operator will do a better job with more speed and more efficiency. This in turn increases economy...and profitability for the owner. Slip into the seat of the B8200HST and see for yourself! We think operation will be more of a pleasure, less of a chore.



Spring-suspended deluxe seat

The high-efficiency spring suspension absorbs ground shocks to reduce fatigue. One-touch control lever permits seat locking in six positions over a six-inch range to adjust pedal and control reach with ease. The high back, contoured seat cushion provides added relief during work hours.

Deep-dish steering wheel

Designed to be more comfortable and to steer more easily. Has no horizontal spokes to become tangled up in. Positioned and tilted toward the operator for increased ease and comfort, too.

Strategically placed controls

All controls are intelligently grouped around the operator's seat for quick identification and easy reach. Extra wide foot rests with anti-slip holes and lots of foot room add to operator comfort and ease of movement in mounting or dismounting.

Easy-to-read instrumentation

With one quick glance the operator can check the total running time and engine rpms. Oil and charge lights warn of potential malfunction. A new fuel gauge accurately monitors the remaining fuel supply.

Specifications

Models:	B8200HST-E (Two wheel drive)	B8200HST-D (Four wheel drive)
Engine:	KUBOTA D950-A-DT vertical, water-cooled, 4-cycle, 3 cylinder diesel	
	Engine gross horsepower 19.0HP at 2,600 rpm (14.2 kw at 43.3 r/s)	
	PTO horsepower 14.5HP at 2,600 rpm (10.8 kw at 43.3 r/s) (Manufacturer's estimate)	
	Total displacement 56.6 cu.in. (927 cc)	
	Rated revolution 2,600 rpm (43.3 r/s)	
Fuel tank:	Capacity 5.3 U.S. gal (20 lits)	
Power take-off:		
Rear PTO speed	First 540 rpm (9.0 r/s)	
	Second 748 rpm (12.5 r/s)	
	at engine speed 2,534 rpm (42.2 r/s)	
Mid PTO speed	First 1,745 rpm (29.1 r/s)	
	Second 2,416 rpm (40.3 r/s)	
	at engine speed 2,600 rpm (43.3 r/s)	
Front PTO speed	2,600 rpm (43.3 r/s)	
Hydraulics:	Pump capacity 6.5 U.S. gpm (24.5 l/min.)	
	Implement controls—Position control	
Transmission:	Hydrostatic transmission (HST & gear, Aux. 3 gears)	
Travel speeds: (12.4—16 tires)		
Forward L	0— 2.86 mph (0— 4.60 km/h)	0— 2.86 mph (0— 4.60 km/h)
M	0— 6.14 mph (0— 9.88 km/h)	0— 6.14 mph (0— 9.88 km/h)
H	0—11.31 mph (0—18.19 km/h)	0—11.31 mph (0—18.19 km/h)
Reverse L	0— 2.29 mph (0— 3.68 km/h)	0— 2.29 mph (0— 3.68 km/h)
M	0— 4.91 mph (0— 7.90 km/h)	0— 4.91 mph (0— 7.90 km/h)
H	0— 9.05 mph (0—14.55 km/h)	0— 9.05 mph (0—14.55 km/h)
Brakes:	Dry internal expanding type	
Tires: Farm	Front 6.50—10, 4.00—12	Front 6—12
	Rear 12.4—16, 8.3—24	Rear 12.4—16
Turf	Front 23 x 8.50—12	Front 24 x 8.50—12
	Rear 13.6—16	Rear 13.6—16
Dimensions:		
Total length See Note (a)	106.7 in. (2,710 mm)	
Total width See Note (b)	53.7 in. (1,365 mm)	
Overall height See Note (c)	74.8 in. (1,900 mm)	
Shipping weight: See Note (d)	1,581 lbs. (717 kg)	1,698 lbs. (770 kg)
Turning radius: (with brakes)	94.5 in. (2.4 m)	110.2 in. (2.8 m)
Wheel tread: Front	35.6 in. (905 mm)	35.4 in. (900 mm)
Rear	41.3 in. (1,050 mm)	
Wheel base:	60.4 in. (1,535 mm)	
Ground clearance: See Note (e)	9.3 in. (235 mm)	
Standard equipment:	Two front headlights, 2-speed rear PTO shaft and PTO guard, 2-speed Mid PTO shaft, Dry internal expanding brakes, Differential locking device, Swinging drawbar hitch, Hydraulic pump, Overrunning clutch, Adjustable seat with spring-suspension, 12V battery, Vertical muffler, Air cleaner, Fuel tank (5.3 U.S. gal = 20ℓ), Rear fenders, Fender handrail, Foot rests, Safety starting switch, 3-point hitch, Hazard lamps, Tail lamps, Safety guard, SMV emblem bracket, Hydraulic pump and provisions for additional hydraulic outlet, Mid hydraulic outlet, ROPS and seat belt.	
Operation control:	Brake pedals, Gear shift levers, Clutch pedal, PTO lever, Engine stopping knob, Parking brake lever, Hand accelerators, Front wheel drive lever (4WD only), Hydraulic control lever, HST foot pedal and HST speed control lever.	
Instrument panel:	Hour meter, Oil pressure warning lamp, Engine and PTO tachometer, Decompression device and glow plug indicator, Fuel gauge, Starting switch, Light switch, Hazard lamp switch.	
Optional equipment:	Power steering, Swinging drawbar, Front bumper weight, SMV emblem, Horizontal muffler, 35A alternator, Rear working lamp, Front PTO shaft.	

The company reserves the right to change the above specifications without notice.
For safety ROPS with a seat belt is recommended by Kubota in almost all applications.

Notes: (a) from the front bumper to the lower link end.
(b) from the outer edges of the rear tires.
(c) from the top of the vertical muffler,
(d) including the 3-point hitch.
(e) to the Mid PTO case,

Nothing like it on earth™

KUBOTA TRACTOR CORPORATION

CORPORATE OFFICE: 550 W. Artesia Blvd., Compton, CA 90220 Tel: (213) 537-2531 Telex: 4720632 KUBOTRAC
WESTERN DIVISION: 1530 E. Shaw Ave., Suite 118, Fresno, CA 93710 Tel: (209) 222-5226
CENTRAL DIVISION: 13780 Benchmark Drive Farmers Branch, Texas 75234 Tel: (214) 241-5900
NORTHERN DIVISION: 438 McCormick Blvd., Columbus, OH 43213 Tel: (614) 868-1278
SOUTHEAST DIVISION: Interstate Industrial Park, 4444 Shackelford Rd., Norcross, GA 30093 Tel: (404) 923-9990