

Instructions for Parts Books

The heading at the top of the page will be the same for the picture of the parts as it is for the page with the part numbers.

Definition of column headings on part number pages:

REF.No → The number referring to the part on the picture page of the parts book.

Part No. → The number assigned to this part at the time of printing the parts book.

Description → Description of part.

Q'ty → Quantity of part used on that page.

S.No. → Serial number range of the equipment that this part will fit.

>= Your serial number should be greater than or equal to the number shown.

<= Your serial number should be lesser than or equal to the serial number shown.

I/C → Interchangeability of part shown.

↔ The part shown will work for the older and later serial number.

The part shown is not interchangeable with the other serial number.

← new for old

→ old for new

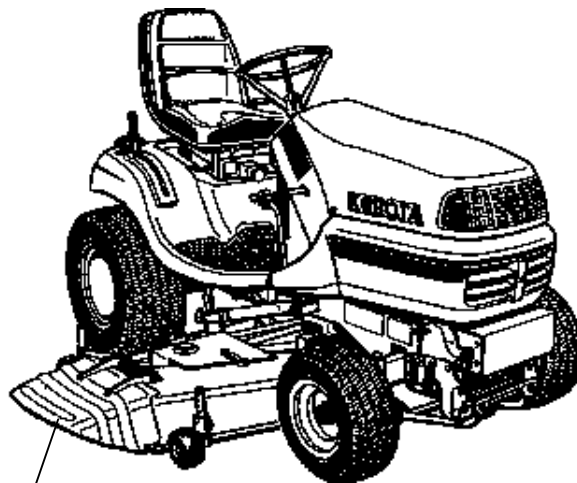
Remarks → Notes about this particular part. Sometimes this may say except [FR] or [CA]

Note about Country Codes:

The parts books we use in the United States of America may also contain information about a part that would be different in another country. It is important that you are aware of the country codes in some instances.

| Symbol | Country |
|--------|--------------------------|
| A | United States of America |
| CA | Canada |
| FR | France |
| GR | Greece |
| PO | Portugal |
| AU | Australia |

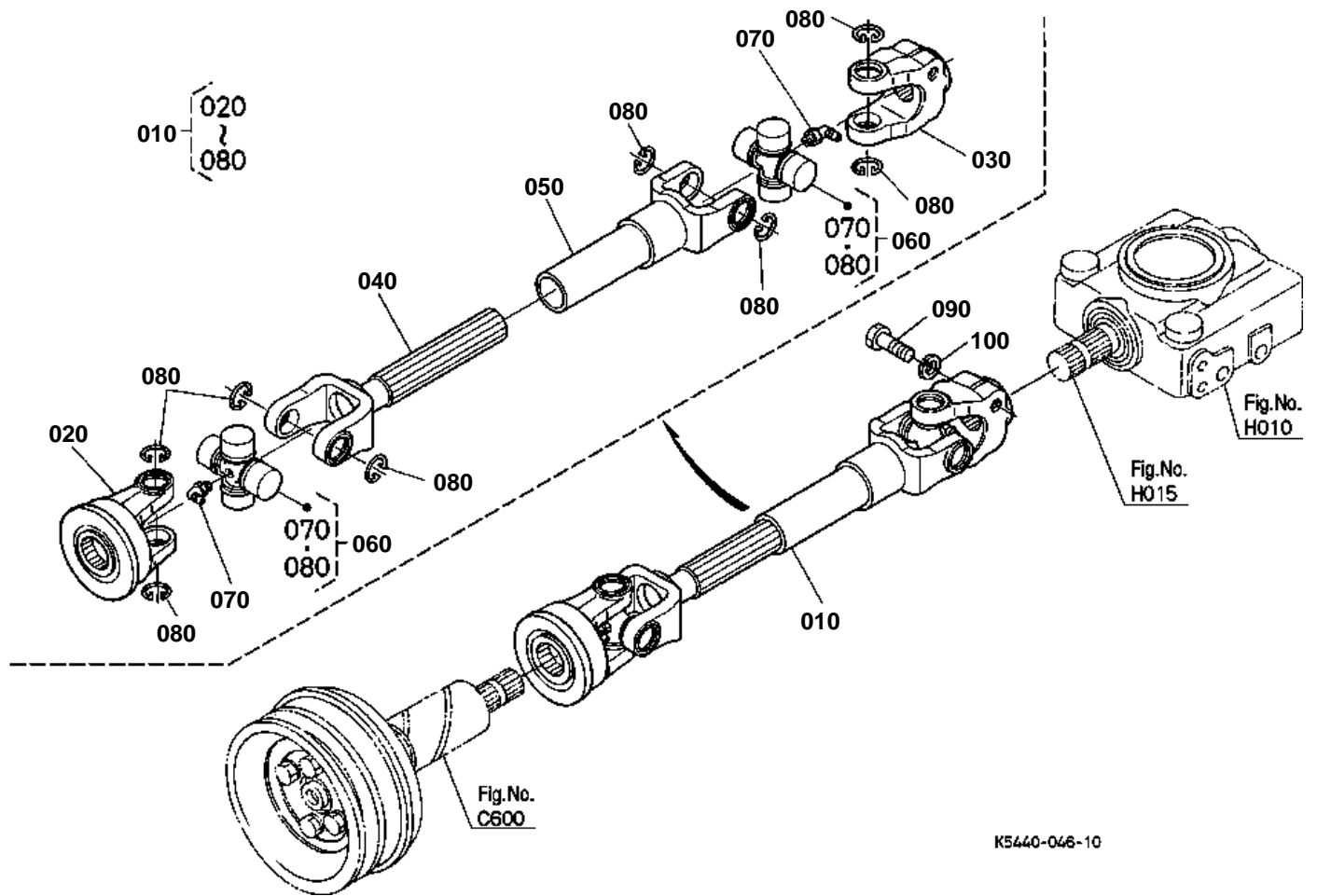
If the remarks column says for example EXCEPT [FR] this part works in all countries except France. That means it will work here in the USA.



MOWER

| Item | Part No. | Description | Book |
|-------|----------|----------------------------------|----------|
| MOWER | 03H001 | UNIVERSAL JOINT | 100K0659 |
| | 03H010 | BEVEL GEAR CASE | 100K0659 |
| | 03H015 | INPUT SHAFT/CENTER PULLEY | 100K0659 |
| | 03H020 | PULLEY HOLDER/BLADE(CENTER) | 100K0659 |
| | 03H030 | PULLEY HOLDER/BLADE(LEFT) | 100K0659 |
| | 03H040 | PULLEY HOLDER/BLADE(RIGHT) | 100K0659 |
| | 03H100 | TENSION PULLEY/MOWER BELT | 100K0659 |
| | 03H20001 | MOWER DECK AND COVER [RCK54-24G] | 100K0659 |
| | 03H210 | DISCHARGE COVER | 100K0659 |
| | 03H300 | GAUGE WHEEL | 100K0659 |
| | 03H50001 | FRONT LINK LEVER [RCK54-24G] | 100K0659 |
| | 03H800 | MOWER LABEL | 100K0659 |

UNIVERSAL JOINT



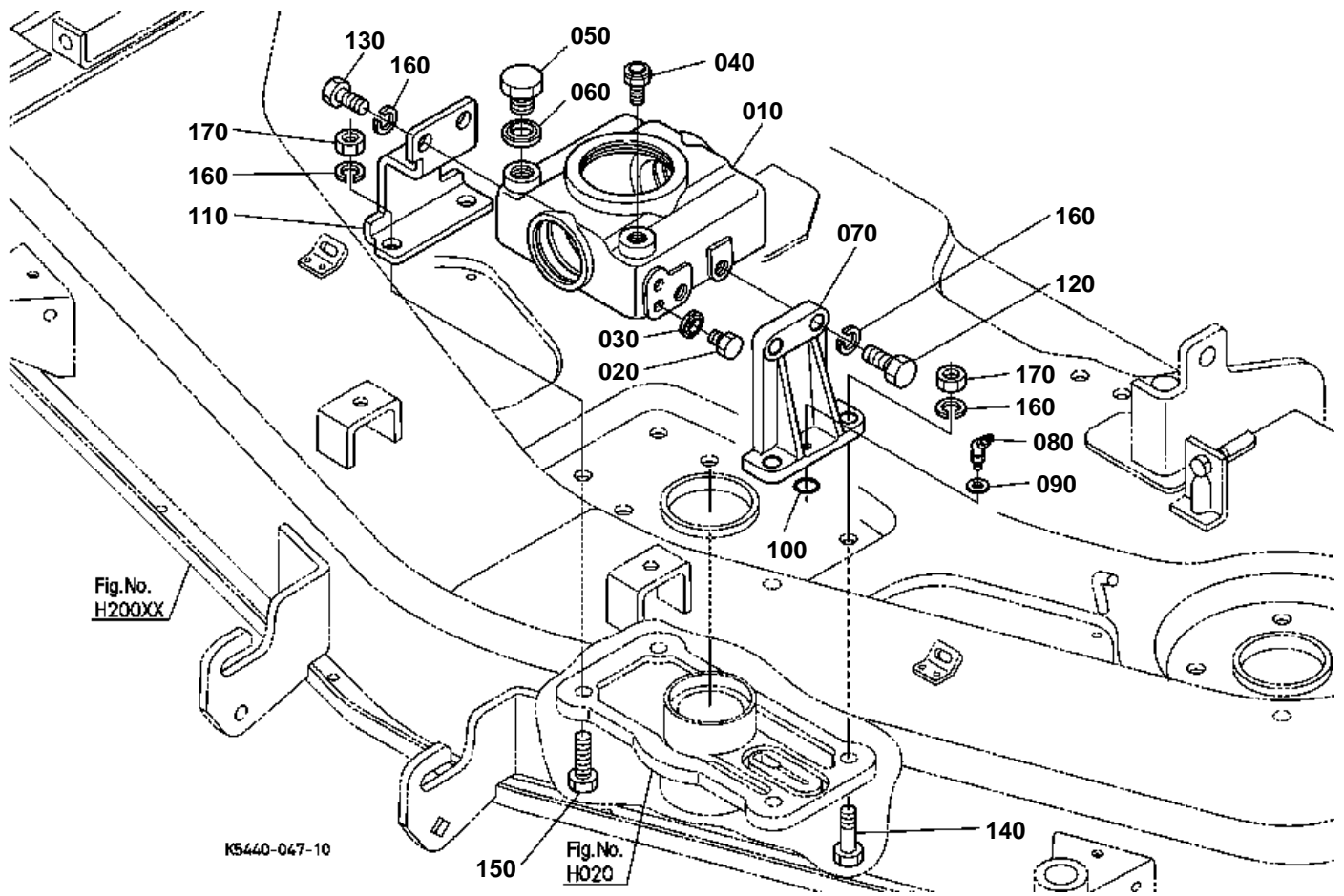


UNIVERSAL JOINT

↔ Interchangeable; ≠ not interchangeable; ← new for old; → old for new

| REF.No | Part No. | Description | Q'ty | S.No. | I/C | REMARKS | Weight (kgf) | Weight (lb) |
|--------|-------------|----------------------|------|-------|-----|---------|--------------|-------------|
| 010 | K5460-32030 | ASSY JOINT UNIVERSAL | 1 | | | | 3.05 | 6.71 |
| 020 | 76539-31150 | YOKE QUICK | 1 | | | | 0.55 | 1.21 |
| 030 | K5371-31130 | YOKE PTO | 1 | | | | 0.48 | 1.056 |
| 040 | K5460-31190 | SHAFT JOINT | 1 | | | | 0.98 | 2.156 |
| 050 | K5700-31170 | YOKE JOINT | 1 | | | | 0.61 | 1.342 |
| 060 | 76539-31180 | ASSY JOINT CROSS | 2 | | | | 0.2 | 0.44 |
| 070 | 76539-31210 | NIPPLE GREASE | 2 | | | | 0.01 | 0.022 |
| 080 | 76539-32120 | RING SNAP | 8 | | | | 0.003 | 0.0066 |
| 090 | 01053-51035 | BOLT | 1 | | | | 0.03 | 0.066 |
| 100 | 04512-60100 | WASHER SPRING | 1 | | | | 0.002 | 0.0044 |

BEVEL GEAR CASE

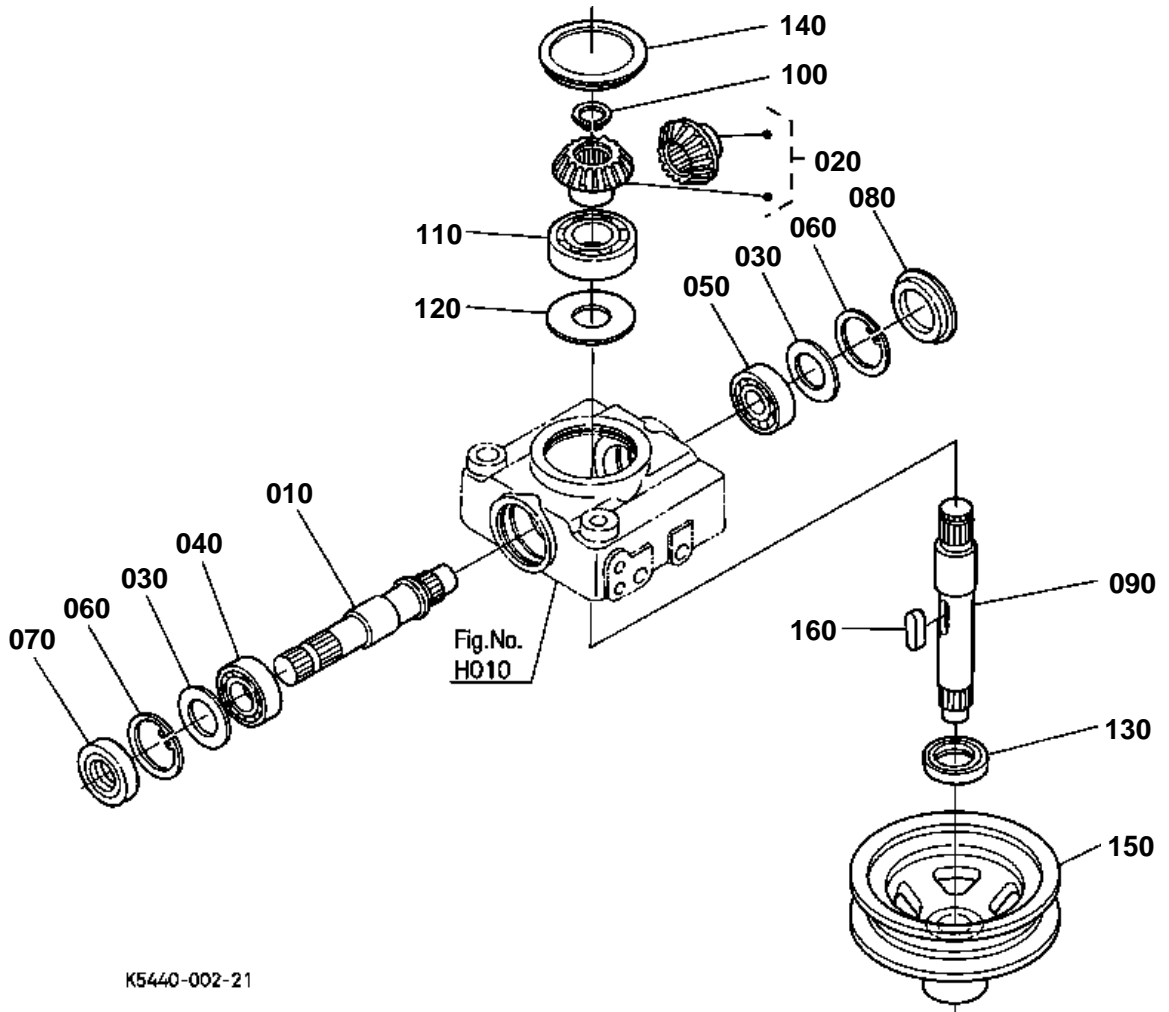


**BEVEL GEAR CASE**

↔ Interchangeable; ≠ not interchangeable; ← new for old; → old for new

| REF.No | Part No. | Description | Q'ty | S.No. | I/C | REMARKS | Weight (kgf) | Weight (lb) |
|--------|-------------|--------------------|------|-------|-----|---------|--------------|-------------|
| 010 | K5761-33115 | CASE BEVEL GEAR | 1 | | | | 3.82 | 8.404 |
| 020 | 01153-50812 | BOLT | 2 | | | | 0.008 | 0.0176 |
| 030 | 04717-00800 | WASHER WITH RUBBER | 2 | | | | 0.001 | 0.0022 |
| 040 | K5761-33250 | PLUG BREATHER | 1 | | | | 0.006 | 0.0132 |
| 050 | 06331-35016 | PLUG | 1 | | | | 0.04 | 0.088 |
| 060 | 04711-00300 | GASKET | 1 | | | | 0.001 | 0.0022 |
| 070 | K5460-72010 | STAY CASE LH | 1 | | | | 0.66 | 1.452 |
| 080 | K5763-44250 | NIPPLE GREASE | 1 | | | | 0.01 | 0.022 |
| 090 | K5763-27340 | SHIM ADJUST | 1 | | | | 0.001 | 0.0022 |
| 100 | 04811-06120 | O RING | 1 | | | | 0 | 0 |
| 100 | 04816-06120 | O RING | 1 | | ← | | 0.002 | 0.0044 |
| 110 | K5460-72020 | STAY CASE RH | 1 | | | | 0.001 | 0.0022 |
| 120 | K5763-33210 | BOLT REAMER | 2 | | | | 0.04 | 0.088 |
| 130 | 01073-51225 | BOLT | 2 | | | | 0.035 | 0.077 |
| 140 | K5763-33230 | BOLT REAMER | 2 | | | | 0.045 | 0.099 |
| 150 | 01073-51235 | BOLT | 2 | | | | 0.045 | 0.099 |
| 160 | 04512-60120 | WASHER SPRING | 8 | | | | 0.005 | 0.011 |
| 170 | 02074-50120 | NUT | 4 | | | | 0.015 | 0.033 |

INPUT SHAFT/CENTER PULLEY



K5440-002-21

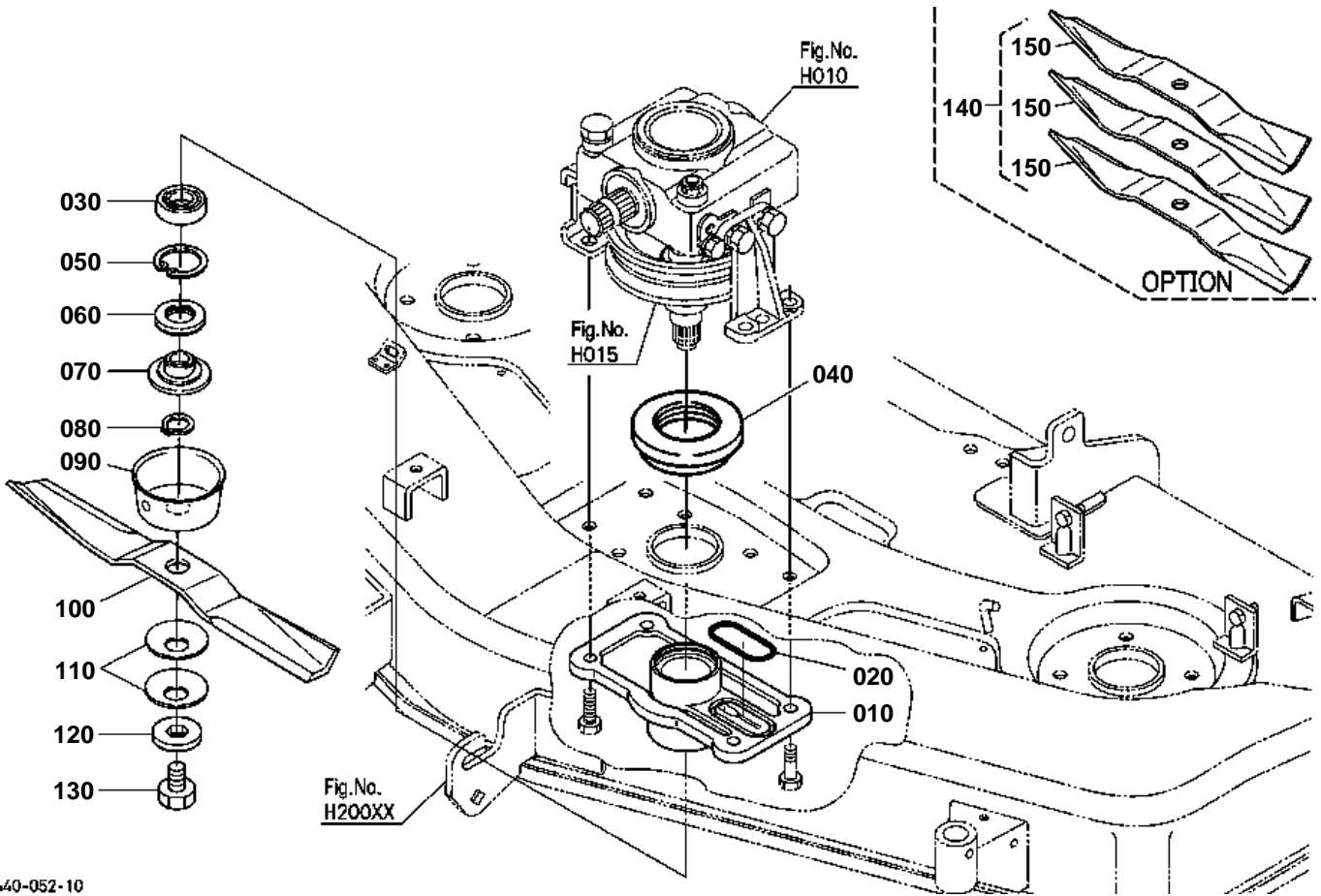


INPUT SHAFT/CENTER PULLEY

↔ Interchangeable; ≠ not interchangeable; ← new for old; → old for new

| REF.No | Part No. | Description | Q'ty | S.No. | I/C | REMARKS | Weight (kgf) | Weight (lb) |
|--------|-------------|-------------------|------|-------|-----|---------|--------------|-------------|
| 010 | K5763-33310 | SHAFT PINION | 1 | | | | 0.66 | 1.452 |
| 020 | K5761-33320 | KIT GEAR BEVEL | 1 | | | 16-19T | 0.45 | 0.99 |
| 030 | 36330-28420 | SHIM | 2 | | | 0.2mm | 0.002 | 0.0044 |
| 030 | 36330-28410 | SHIM | 2 | | | 0.3mm | 0.002 | 0.0044 |
| 040 | 08101-06205 | BEARING BALL | 1 | | | | 0.14 | 0.308 |
| 050 | 08101-06304 | BEARING BALL | 1 | | | | 0.146 | 0.3212 |
| 060 | 04611-00520 | CIR CLIP INTERNAL | 2 | | | | 0.009 | 0.0198 |
| 070 | 76535-33440 | SEAL OIL | 1 | | | | 0.02 | 0.044 |
| 080 | 63313-32270 | CAP | 1 | | | | 0.03 | 0.066 |
| 090 | K5460-71270 | SHAFT BLADE | 1 | | | | 0.67 | 1.474 |
| 100 | 04612-00220 | CIR CLIP EXTERNAL | 1 | | | | 0.001 | 0.0022 |
| 110 | 70712-33550 | BEARING BALL | 1 | | | | 0.22 | 0.484 |
| 120 | 70712-33570 | SHIM | 1 | | | 0.1mm | 0.001 | 0.0022 |
| 120 | 76539-33410 | SHIM | 1 | | | 0.2mm | 0.001 | 0.0022 |
| 130 | K5761-33540 | SEAL OIL | 1 | | | | 0.012 | 0.0264 |
| 140 | 7C765-51260 | CAP | 1 | | | | 0.07 | 0.154 |
| 150 | K5371-33520 | PULLEY CENTER | 1 | | | | 1.78 | 3.916 |
| 160 | 05712-00728 | KEY FEATHER | 1 | | | | 0.01 | 0.022 |

PULLEY HOLDER/BLADE(CENTER)



K5440-052-10



PULLEY HOLDER/BLADE(CENTER)

↔ Interchangeable; ≠ not interchangeable; ← new for old; → old for new

| REF.No | Part No. | Description | Q'ty | S.No. | I/C | REMARKS | Weight (kgf) | Weight (lb) |
|--------|-------------|----------------------|------|---------|-----|-----------------|--------------|-------------|
| 010 | K5371-34110 | HOLDER PULLEY CENTER | 1 | <=10385 | | | 0 | 0 |
| 010 | K5371-34113 | HOLDER PULLEY CENTER | 1 | >=10386 | ← | | 1.2 | 2.64 |
| 020 | 04811-00500 | O RING | 1 | | | | 0 | 0 |
| 020 | 04816-00500 | O RING | 1 | | ← | | 0.003 | 0.0066 |
| 030 | 08101-06205 | BEARING BALL | 1 | | | | 0.14 | 0.308 |
| 040 | K5651-34120 | OIL SEAL UPPER | 1 | | | NOT SALE | 0 | 0 |
| 040 | 70722-34120 | SEAL OIL | 1 | | ← | | 0.025 | 0.055 |
| 050 | 04611-00520 | CIR CLIP INTERNAL | 1 | | | | 0.009 | 0.0198 |
| 060 | K5651-34160 | OIL SEAL LOWER | 1 | | | NOT SALE | 0 | 0 |
| 060 | 70725-34162 | SEAL OIL | 1 | | ← | | 0.024 | 0.0528 |
| 070 | K5761-34152 | BOSS SPLINE | 1 | | | | 0.28 | 0.616 |
| 080 | 04612-00220 | CIR CLIP EXTERNAL | 1 | | | | 0.001 | 0.0022 |
| 090 | K5651-34310 | COVER DUST | 1 | | | | 0.1 | 0.22 |
| 100 | K5351-34340 | BLADE | 1 | | | | 1.4 | 3.08 |
| 100 | K5351-34340 | BLADE | 1 | | ↔ | | 1.4 | 3.08 |
| 110 | K5371-34350 | SPRING CORN | 2 | | | | 0.03 | 0.066 |
| 120 | K5371-34390 | WASHER LOCK | 1 | | | | 0.052 | 0.1144 |
| 130 | K5371-34370 | BOLT BLADE | 1 | | | | 0.078 | 0.1716 |
| 140 | K5351-97550 | KIT BLADE | 1 | | | OPTION(HI-LIFT) | 4.278 | 9.4116 |
| 150 | K5351-99020 | BLADE | 3 | | | OPTION(HI-LIFT) | 1.07 | 2.354 |
| 150 | K5351-99040 | BLADE | 3 | | ↔ | OPTION(HI-LIFT) | 0 | 0 |

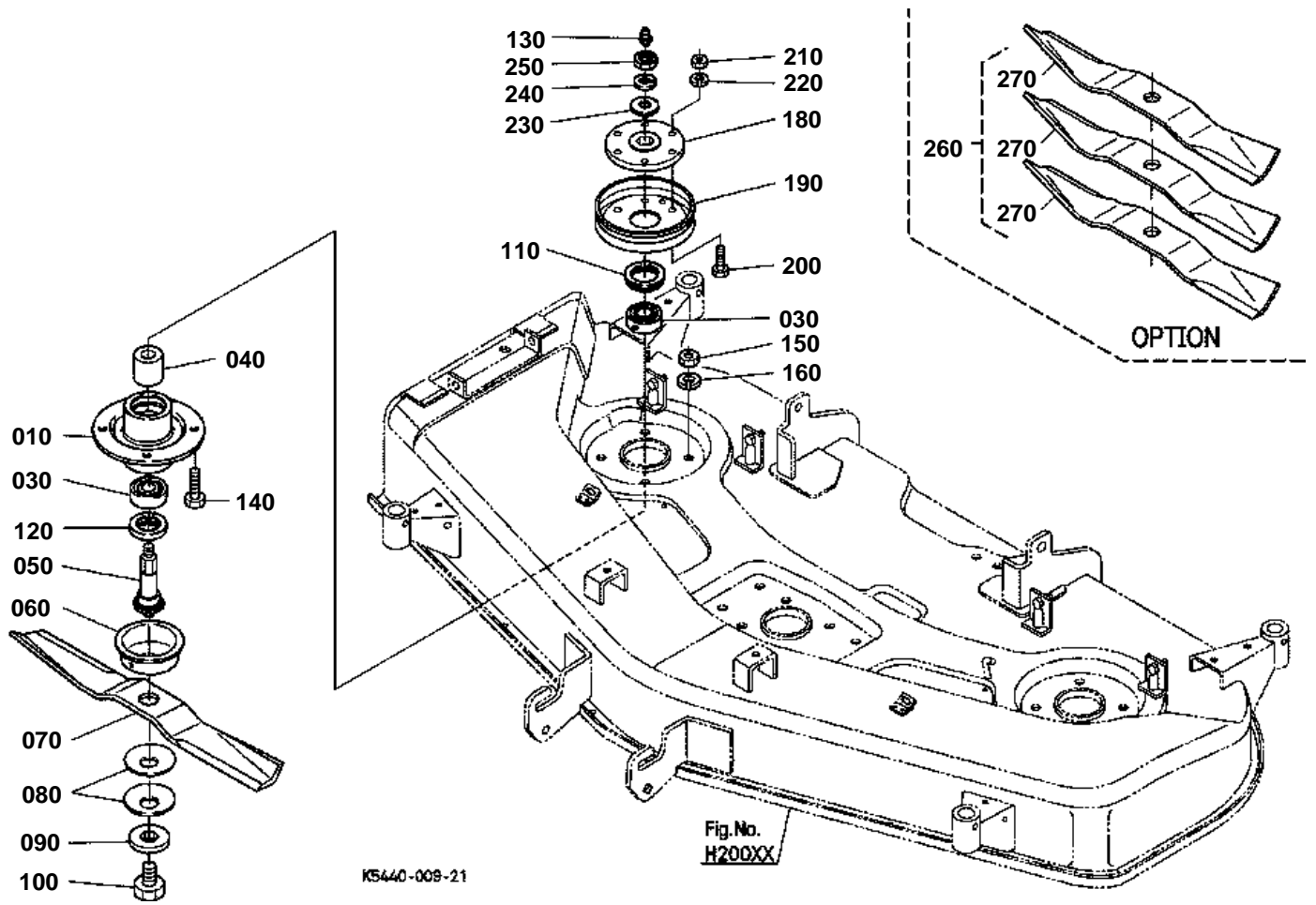


PULLEY HOLDER/BLADE(LEFT)

↔ Interchangeable; ≠ not interchangeable; ← new for old; → old for new

| REF.No | Part No. | Description | Q'ty | S.No. | I/C | REMARKS | Weight (kgf) | Weight (lb) |
|--------|-------------|-------------------|------|-------|-----|-----------------|--------------|-------------|
| 010 | K5221-71210 | HOLDER PULLEY | 1 | | | | 1 | 2.2 |
| 020 | 99999-99999 | BLANK | 0 | | | | 0 | 0 |
| 030 | 08101-06205 | BEARING BALL | 2 | | | | 0.14 | 0.308 |
| 040 | K5221-71130 | COLLAR | 1 | | | | 0.055 | 0.121 |
| 050 | K5371-34552 | SHAFT SIDE BLADE | 1 | | | | 0.615 | 1.353 |
| 060 | K5651-34310 | COVER DUST | 1 | | | | 0.1 | 0.22 |
| 070 | K5351-34330 | BLADE | 1 | | | | 0 | 0 |
| 070 | K5351-34340 | BLADE | 1 | | ↔ | | 1.4 | 3.08 |
| 080 | K5371-34350 | SPRING CORN | 2 | | | | 0.03 | 0.066 |
| 090 | K5371-34390 | WASHER LOCK | 1 | | | | 0.052 | 0.1144 |
| 100 | K5371-34370 | BOLT BLADE | 1 | | | | 0.078 | 0.1716 |
| 110 | K5651-34120 | OIL SEAL UPPER | 1 | | | NOT SALE | 0 | 0 |
| 110 | 70722-34120 | SEAL OIL | 1 | | ← | | 0.025 | 0.055 |
| 120 | K5651-34160 | OIL SEAL LOWER | 1 | | | NOT SALE | 0 | 0 |
| 120 | 70725-34162 | SEAL OIL | 1 | | ← | | 0.024 | 0.0528 |
| 130 | K1122-15150 | NIPPLE GREASE | 1 | | | | 0.002 | 0.0044 |
| 140 | 01073-51230 | BOLT | 4 | | | | 0.041 | 0.0902 |
| 150 | 02074-50120 | NUT | 4 | | | | 0.015 | 0.033 |
| 160 | 04512-60120 | WASHER SPRING | 4 | | | | 0.005 | 0.011 |
| 170 | 99999-99999 | BLANK | 0 | | | | 0 | 0 |
| 180 | K5371-34572 | BOSS SIDE PULLY | 1 | | | | 0.7 | 1.54 |
| 190 | K5371-34580 | PULLEY BLADE SIDE | 1 | | | | 0.65 | 1.43 |
| 200 | 01053-50825 | BOLT | 6 | | | | 0.014 | 0.0308 |
| 210 | 02054-50080 | NUT | 6 | | | | 0.005 | 0.011 |
| 220 | 75599-33012 | WASHER SPRING | 6 | | | | 0.002 | 0.0044 |
| 230 | 04013-50180 | WASHER PLAIN | 1 | | | | 0.015 | 0.033 |
| 240 | 04512-60180 | WASHER SPRING | 1 | | | | 0.02 | 0.044 |
| 250 | 02074-50180 | NUT | 1 | | | | 0.043 | 0.0946 |
| 260 | K5351-97550 | KIT BLADE | 1 | | | OPTION(HI-LIFT) | 4.278 | 9.4116 |
| 270 | K5351-99020 | BLADE | 3 | | | OPTION(HI-LIFT) | 1.07 | 2.354 |
| 270 | K5351-99040 | BLADE | 3 | | ↔ | OPTION(HI-LIFT) | 0 | 0 |

PULLEY HOLDER/BLADE(RIGHT)



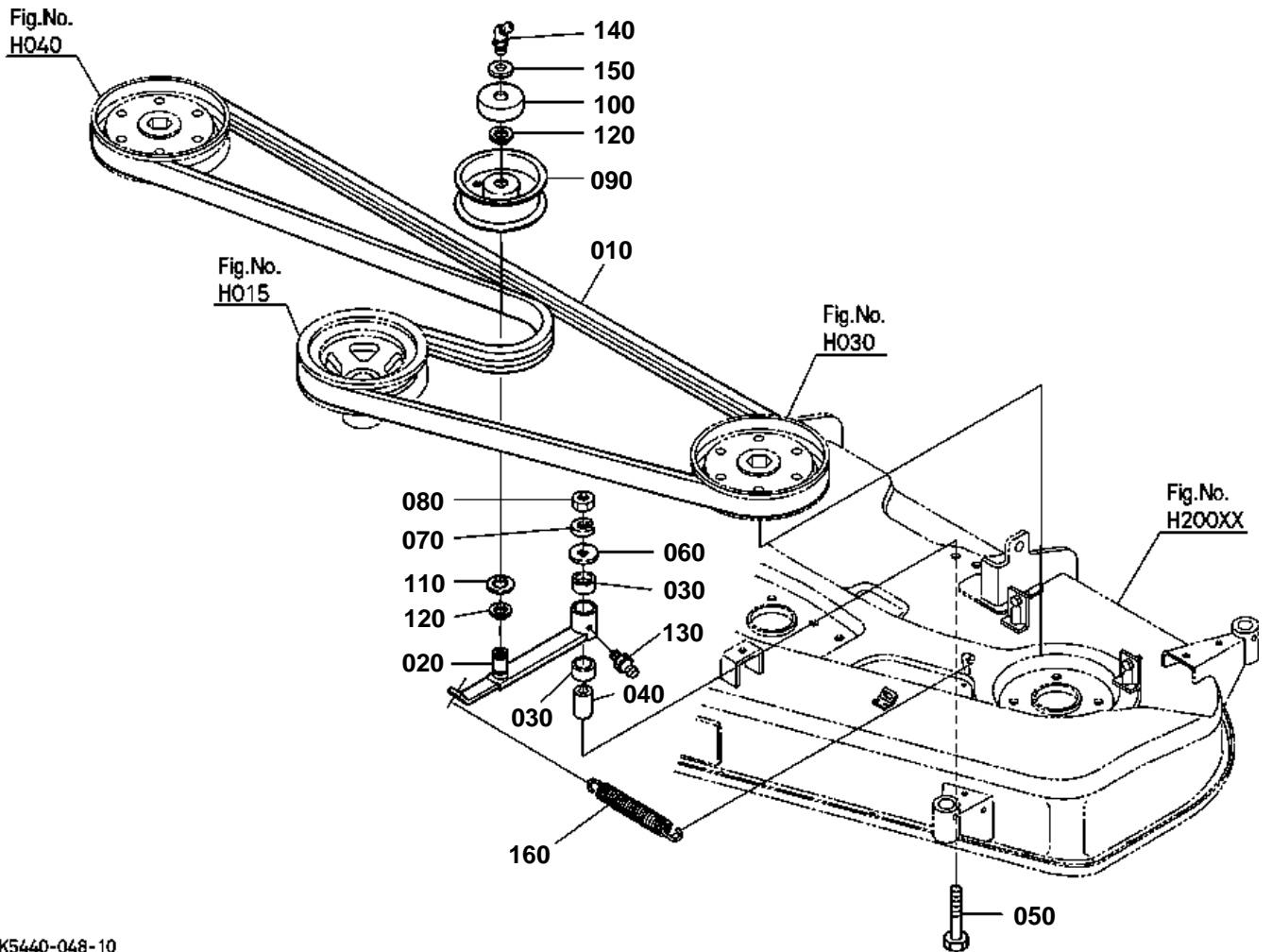


PULLEY HOLDER/BLADE(RIGHT)

↔ Interchangeable; ≠ not interchangeable; ← new for old; → old for new

| REF.No | Part No. | Description | Q'ty | S.No. | I/C | REMARKS | Weight (kgf) | Weight (lb) |
|--------|-------------|-------------------|------|-------|-----|-----------------|--------------|-------------|
| 010 | K5221-71210 | HOLDER PULLEY | 1 | | | | 1 | 2.2 |
| 020 | 99999-99999 | BLANK | 0 | | | | 0 | 0 |
| 030 | 08101-06205 | BEARING BALL | 2 | | | | 0.14 | 0.308 |
| 040 | K5221-71130 | COLLAR | 1 | | | | 0.055 | 0.121 |
| 050 | K5371-34552 | SHAFT SIDE BLADE | 1 | | | | 0.615 | 1.353 |
| 060 | K5651-34310 | COVER DUST | 1 | | | | 0.1 | 0.22 |
| 070 | K5351-34330 | BLADE | 1 | | | | 0 | 0 |
| 070 | K5351-34340 | BLADE | 1 | | ↔ | | 1.4 | 3.08 |
| 080 | K5371-34350 | SPRING CORN | 2 | | | | 0.03 | 0.066 |
| 090 | K5371-34390 | WASHER LOCK | 1 | | | | 0.052 | 0.1144 |
| 100 | K5371-34370 | BOLT BLADE | 1 | | | | 0.078 | 0.1716 |
| 110 | K5651-34120 | OIL SEAL UPPER | 1 | | | NOT SALE | 0 | 0 |
| 110 | 70722-34120 | SEAL OIL | 1 | | ← | | 0.025 | 0.055 |
| 120 | K5651-34160 | OIL SEAL LOWER | 1 | | | NOT SALE | 0 | 0 |
| 120 | 70725-34162 | SEAL OIL | 1 | | ← | | 0.024 | 0.0528 |
| 130 | K1122-15150 | NIPPLE GREASE | 1 | | | | 0.002 | 0.0044 |
| 140 | 01073-51230 | BOLT | 4 | | | | 0.041 | 0.0902 |
| 150 | 02074-50120 | NUT | 4 | | | | 0.015 | 0.033 |
| 160 | 04512-60120 | WASHER SPRING | 4 | | | | 0.005 | 0.011 |
| 170 | 99999-99999 | BLANK | 0 | | | | 0 | 0 |
| 180 | K5371-34572 | BOSS SIDE PULLY | 1 | | | | 0.7 | 1.54 |
| 190 | K5371-34580 | PULLEY BLADE SIDE | 1 | | | | 0.65 | 1.43 |
| 200 | 01053-50825 | BOLT | 6 | | | | 0.014 | 0.0308 |
| 210 | 02054-50080 | NUT | 6 | | | | 0.005 | 0.011 |
| 220 | 75599-33012 | WASHER SPRING | 6 | | | | 0.002 | 0.0044 |
| 230 | 04013-50180 | WASHER PLAIN | 1 | | | | 0.015 | 0.033 |
| 240 | 04512-60180 | WASHER SPRING | 1 | | | | 0.02 | 0.044 |
| 250 | 02074-50180 | NUT | 1 | | | | 0.043 | 0.0946 |
| 260 | K5351-97550 | KIT BLADE | 1 | | | OPTION(HI-LIFT) | 4.278 | 9.4116 |
| 270 | K5351-99020 | BLADE | 3 | | | OPTION(HI-LIFT) | 1.07 | 2.354 |
| 270 | K5351-99040 | BLADE | 3 | | ↔ | OPTION(HI-LIFT) | 0 | 0 |

TENSION PULLEY/MOWER BELT



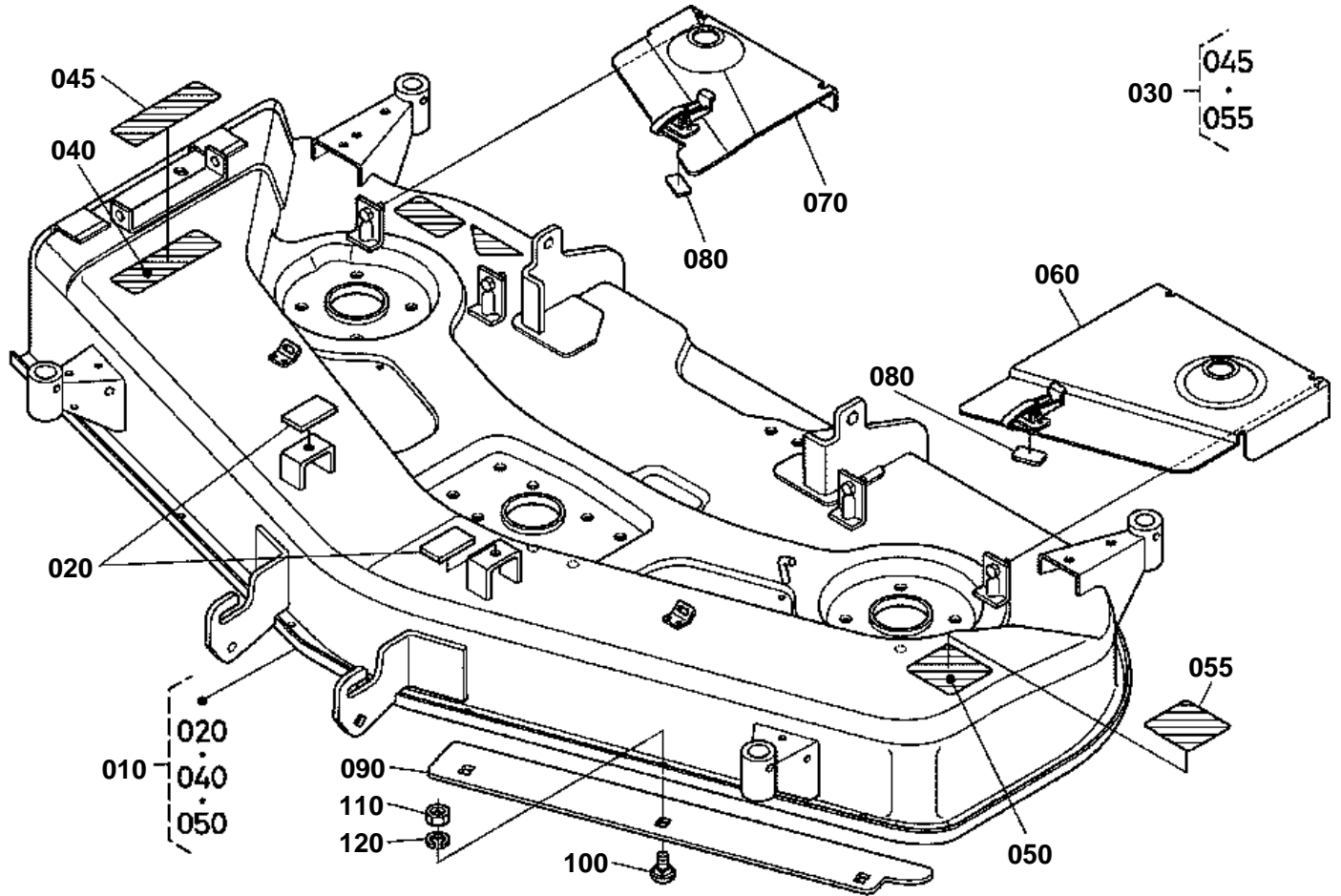
K5440-048-10



TENSION PULLEY/MOWER BELT

↔ Interchangeable; ≠ not interchangeable; ← new for old; → old for new

| REF.No | Part No. | Description | Q'ty | S.No. | I/C | REMARKS | Weight (kgf) | Weight (lb) |
|--------|-------------|-------------------|------|-------|-----|---------|--------------|-------------|
| 010 | K5351-34710 | BELT POLY | 1 | | | | 0.93 | 2.046 |
| 020 | K5371-34730 | ARM TENSION | 1 | | | | 0.57 | 1.254 |
| 030 | K5651-20150 | BUSHING TENSION | 2 | | | | 0.017 | 0.0374 |
| 040 | K5651-34780 | COLLAR TENSION | 1 | | | | 0.055 | 0.121 |
| 050 | 01073-51270 | BOLT | 1 | | | | 0.06 | 0.132 |
| 060 | 75599-32015 | WASHER PLAIN | 1 | | | | 0.01 | 0.022 |
| 070 | 04512-60120 | WASHER SPRING | 1 | | | | 0.005 | 0.011 |
| 080 | 02074-50120 | NUT | 1 | | | | 0.015 | 0.033 |
| 090 | K5651-34880 | PULLEY TENSION | 1 | | | | 0.55 | 1.21 |
| 100 | K5651-34790 | COVER TENSION | 1 | | | | 0.02 | 0.044 |
| 110 | K5651-34800 | SEAL BEARING | 1 | | | | 0.001 | 0.0022 |
| 120 | 04612-00170 | CIR CLIP EXTERNAL | 2 | | | | 0.001 | 0.0022 |
| 130 | K1122-15150 | NIPPLE GREASE | 1 | | | | 0.002 | 0.0044 |
| 140 | K5371-34750 | NIPPLE GREASE | 1 | | | | 0.01 | 0.022 |
| 150 | K5763-27350 | SHIM ADJUST | 1 | | | | 0.001 | 0.0022 |
| 160 | K5763-34750 | SPRING TENSION | 1 | | | | 0.17 | 0.374 |



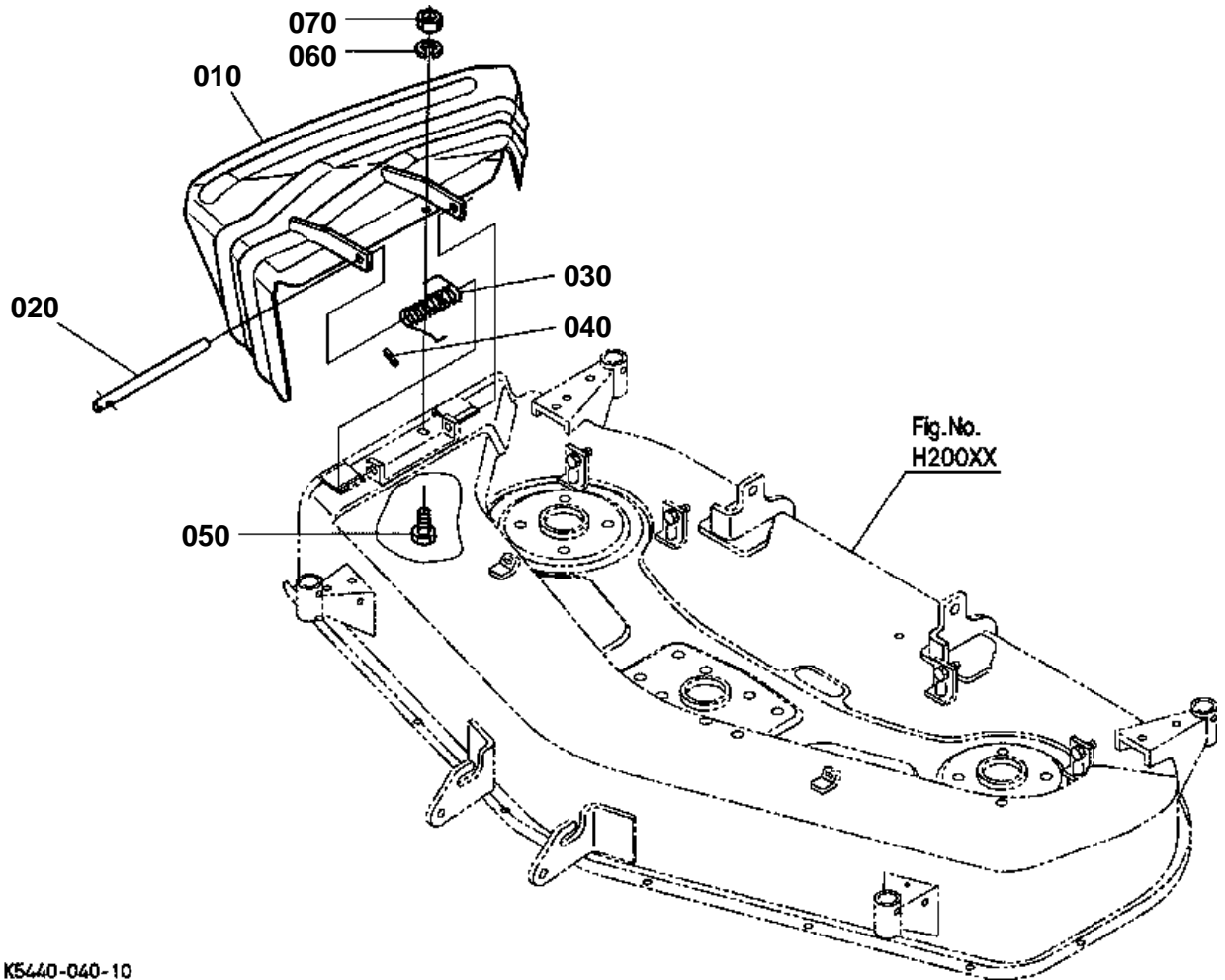
K5440-013-12

**MOWER DECK AND COVER [RCK54-24G]**

↔ Interchangeable; ≠ not interchangeable; ← new for old; → old for new

| REF.No | Part No. | Description | Q'ty | S.No. | I/C | REMARKS | Weight (kgf) | Weight (lb) |
|--------|-------------|---------------------|------|---------|-----|-----------------|--------------|-------------|
| 010 | K5440-41100 | ASSY MOWER DECK | 1 | | | | 0 | 0 |
| 020 | K5460-76210 | RUBBER STOPPER | 2 | | | | 0.015 | 0.033 |
| 030 | K1217-65710 | LABEL SET DANGER | 1 | | | FRENCH | 0.01 | 0.022 |
| 040 | K5112-73110 | LABEL DANGER | 1 | | | ENGLISH | 0.002 | 0.0044 |
| 045 | K1127-65710 | LABEL DANGER | 1 | | | FRENCH NOT SALE | 0.01 | 0.022 |
| 050 | K5112-73120 | LABEL DANGER | 1 | | | ENGLISH | 0.001 | 0.0022 |
| 060 | K5440-41180 | COVER LEFT | 1 | | | | 1.37 | 3.014 |
| 070 | K5351-41200 | COVER RIGHT | 1 | | | | 1.05 | 2.31 |
| 080 | K1122-57160 | PLATE RUBBER | 2 | <=11707 | | | 0.001 | 0.0022 |
| 080 | K1122-57163 | PLATE RUBBER | 2 | >=11708 | ← | | 0.001 | 0.0022 |
| 090 | K5221-72910 | PLATE FRONT LH | 1 | | | | 0.825 | 1.815 |
| 100 | K1122-91320 | BOLT SHORT SQU.NECK | 3 | | | | 0.01 | 0.022 |
| 110 | 02054-50080 | NUT | 3 | | | | 0.005 | 0.011 |
| 120 | 75599-33012 | WASHER SPRING | 3 | | | | 0.002 | 0.0044 |

DISCHARGE COVER



K5440-040-10

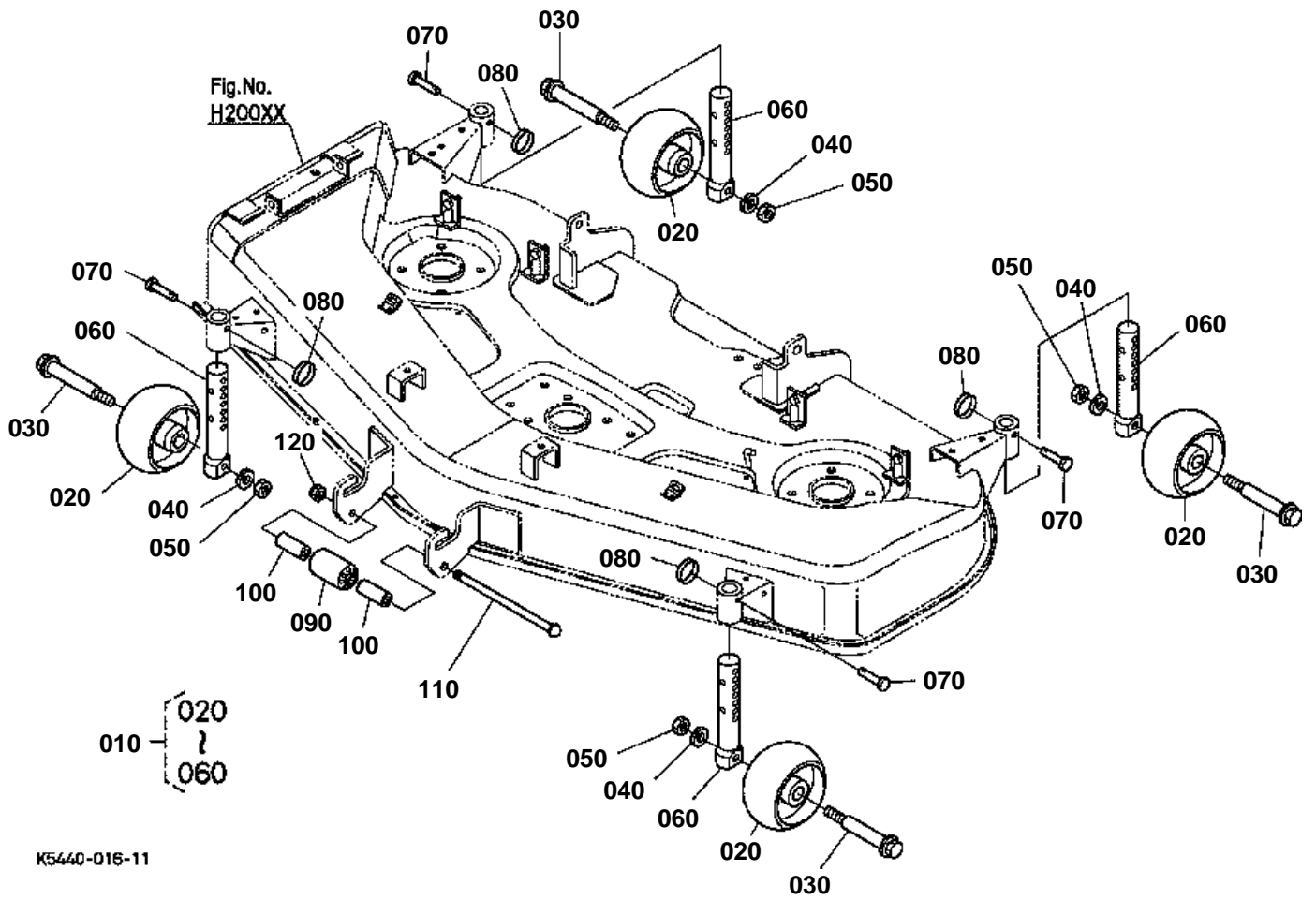


DISCHARGE COVER

↔ Interchangeable; ≠ not interchangeable; ← new for old; → old for new

| REF.No | Part No. | Description | Q'ty | S.No. | I/C | REMARKS | Weight (kgf) | Weight (lb) |
|--------|-------------|------------------|------|-------|-----|---------|--------------|-------------|
| 010 | K5651-47110 | COVER DISCHARGE | 1 | | | | 4.8 | 10.56 |
| 020 | K5651-47150 | PIN DISCHARGE | 1 | | | | 0.2 | 0.44 |
| 030 | K5651-47160 | SPRING DISCHARGE | 1 | | | | 0.12 | 0.264 |
| 040 | 75599-52525 | PIN SPRING | 1 | | | | 0.004 | 0.0088 |
| 050 | 01073-51030 | BOLT | 1 | | | | 0.028 | 0.0616 |
| 060 | 04512-60100 | WASHER SPRING | 1 | | | | 0.002 | 0.0044 |
| 070 | 02018-50100 | NUT | 1 | | | | 0.011 | 0.0242 |

GAUGE WHEEL



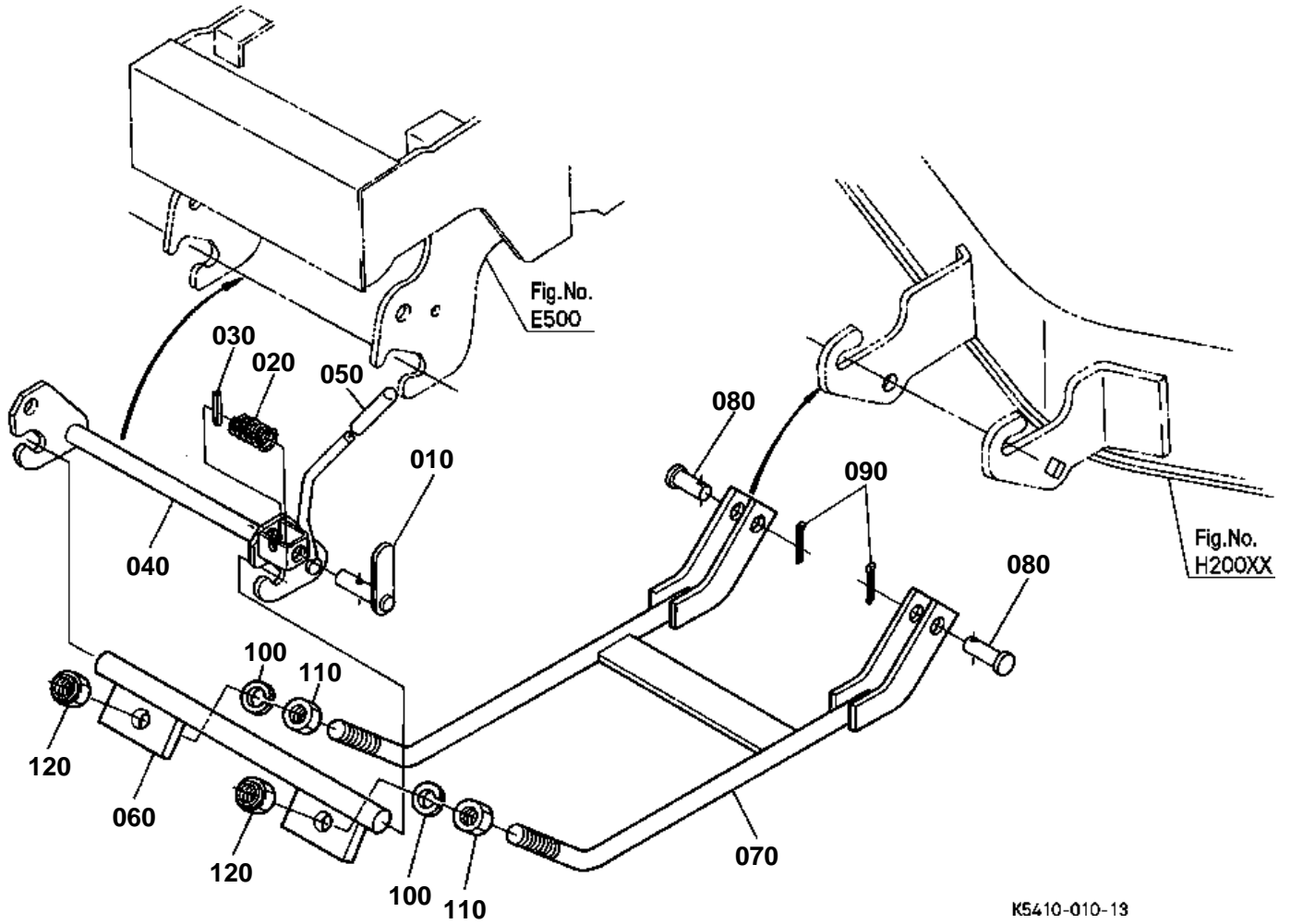


GAUGE WHEEL

↔ Interchangeable; ≠ not interchangeable; ← new for old; → old for new

| REF.No | Part No. | Description | Q'ty | S.No. | I/C | REMARKS | Weight (kgf) | Weight (lb) |
|--------|-------------|-------------------|------|-------|-----|---------|--------------|-------------|
| 010 | K5371-42100 | ASSY GAUGE WHEEL | 4 | | | | 1.25 | 2.75 |
| 020 | K5371-42110 | GAUGE WHEEL | 4 | | | | 0.46 | 1.012 |
| 030 | K5221-72670 | BOLT SHOULDER | 4 | | | | 0.15 | 0.33 |
| 040 | 04512-60100 | WASHER SPRING | 4 | | | | 0.002 | 0.0044 |
| 050 | 02014-50100 | NUT | 4 | | | | 0.011 | 0.0242 |
| 060 | K5221-72680 | PIN GAUGE WHEEL | 4 | | | | 0.65 | 1.43 |
| 070 | 75599-51235 | PIN CLEVIS | 4 | | | | 0.03 | 0.066 |
| 080 | K5112-72730 | RING SNAP | 4 | | | | 0.01 | 0.022 |
| 090 | K5112-72420 | ROLLER ANTI-SCALP | 1 | | | | 0.15 | 0.33 |
| 100 | K5371-44310 | COLLAR WHEEL | 2 | | | | 0.045 | 0.099 |
| 110 | K5221-72650 | BOLT GAUGE | 1 | | | | 0.25 | 0.55 |
| 120 | 02572-50120 | NUT LOCK | 1 | | | | 0.014 | 0.0308 |

FRONT LINK LEVER [RCK54-24G]



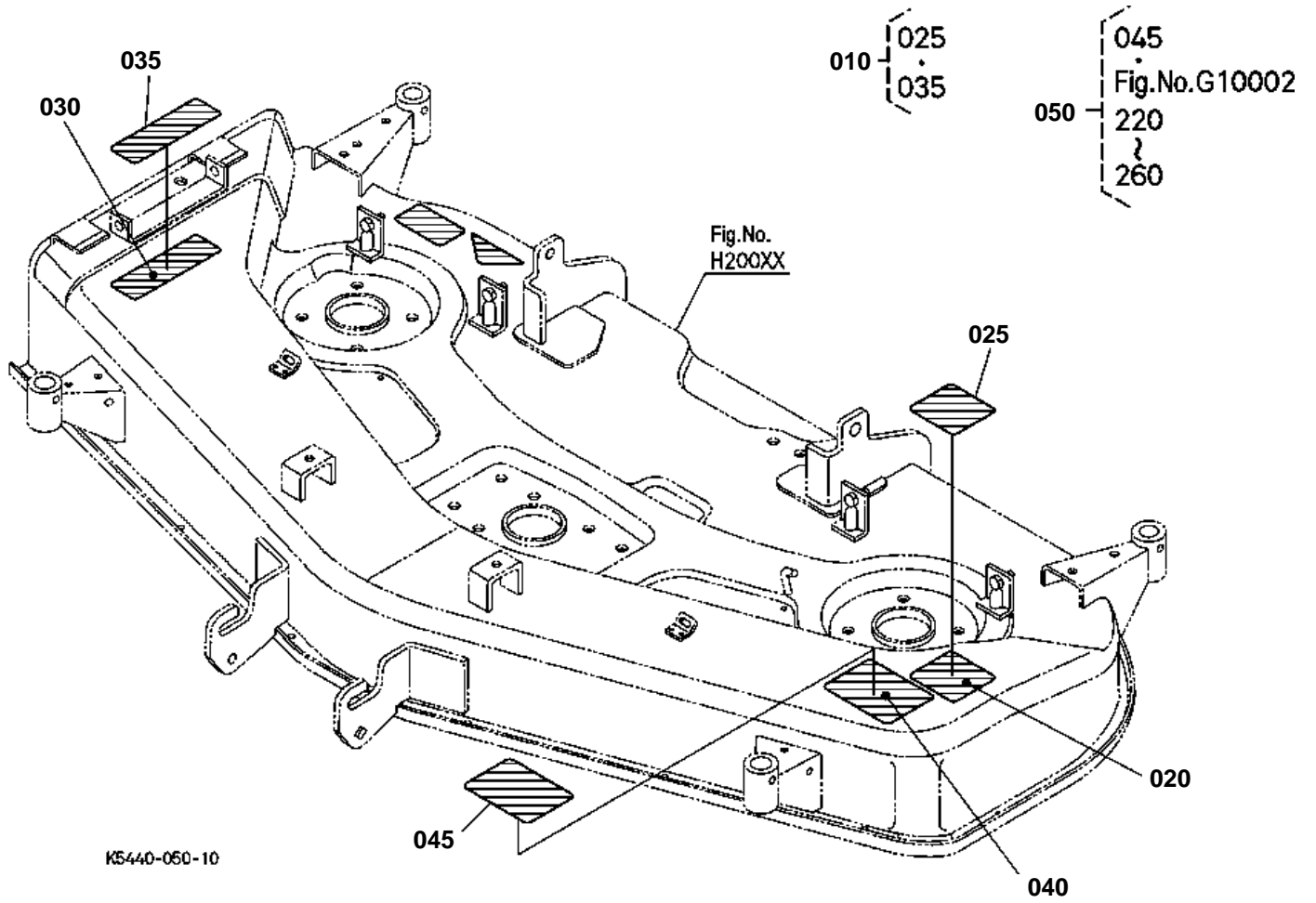


FRONT LINK LEVER [RCK54-24G]

↔ Interchangeable; ≠ not interchangeable; ← new for old; → old for new

| REF.No | Part No. | Description | Q'ty | S.No. | I/C | REMARKS | Weight (kgf) | Weight (lb) |
|--------|-------------|--------------------|------|-------|-----|---------|--------------|-------------|
| 010 | K5221-44540 | PIN HINGE | 1 | | | | 0.119 | 0.2618 |
| 020 | K5221-44550 | SPRING HINGE PIN | 1 | | | | 0.009 | 0.0198 |
| 030 | 75599-52532 | PIN SPRING | 1 | | | | 0.005 | 0.011 |
| 040 | K5221-44583 | LEVER LINK | 1 | | | | 1.34 | 2.948 |
| 050 | K5410-44640 | GRIP LINK | 1 | | | | 0.006 | 0.0132 |
| 060 | K5410-44610 | LINK FRONT | 1 | | | | 0.79 | 1.738 |
| 070 | K5410-44620 | LINK FRONT | 1 | | | | 1.5 | 3.3 |
| 080 | 75599-51730 | PIN CLEVIS | 2 | | | | 0.1 | 0.22 |
| 090 | 75599-53194 | PIN COTTER | 2 | | | | 0.001 | 0.0022 |
| 100 | 75599-33017 | WASHER SPRING LOCK | 2 | | | | 0.005 | 0.011 |
| 110 | 02074-50160 | NUT | 2 | | | | 0.029 | 0.0638 |
| 120 | K1122-91940 | NUT LOCKING | 2 | | | | 0.03 | 0.066 |

MOWER LABEL





MOWER LABEL

↔ Interchangeable; ≠ not interchangeable; ← new for old; → old for new

| REF.No | Part No. | Description | Q'ty | S.No. | I/C | REMARKS | Weight (kgf) | Weight (lb) |
|--------|-------------|------------------|------|-------|-----|-----------------|--------------|-------------|
| 010 | K1217-65710 | LABEL SET DANGER | 1 | | | FRENCH | 0.01 | 0.022 |
| 020 | K5112-73110 | LABEL DANGER | 1 | | | ENGLISH | 0.002 | 0.0044 |
| 025 | K1127-65710 | LABEL DANGER | 1 | | | FRENCH NOT SALE | 0.01 | 0.022 |
| 030 | K5112-73120 | LABEL DANGER | 1 | | | ENGLISH | 0.001 | 0.0022 |
| 040 | K5221-73130 | LABEL ANTI-SCALP | 1 | | | ENGLISH | 0.005 | 0.011 |
| 045 | K1217-65630 | LABEL ANTI-SCALP | 1 | | | FRENCH NOT SALE | 0 | 0 |
| 050 | K2117-65170 | LABEL SET | 1 | | | FRENCH | 0.09 | 0.198 |